





Building your own home can be a lifelong dream, so it's comforting to feel the company you choose to work alongside, is one you feel you can rely on. Competitive Homes is a co-operative of talented architects and independent builders, with the benefits of being supplied by one of New Zealand's leading building material suppliers.

Our builders have excellent reputations that they value and all have a commitment to build only quality homes. You get the advantages of dealing with local people, and the resources and buying benefits of a large, national group.

We offer the complete building package from design, right down to the last little finishing touches with a comprehensive range of options on the way.

Our designs have all been rigorously reviewed and pre-vetted to ensure they meet or exceed local building codes. Frames are constructed from

Laminated Veneer Lumber, making them stronger than conventional framing, but with the cost advantages and sustainability of timber. Plans are fully quantity surveyed so you know, up front, the costs you'll be up for. Our list of inclusions is one of the most comprehensive in the industry and as a result we can confidently give you a fixed price to build and finish a fully decorated home you can simply move straight into.

Competitive Homes guarantee to give you the high quality home you want at a great value price.

CONTENTS

Architectural Series	4
First Series	10
Living Series	24
Transportable Series	32
Townhouse Series	40
Villa Series	48

ARCHITECTURAL SERIES

BH90



BH174G



BH238G



ARCHITECTURAL SERIES

These cleverly designed Architectural Series homes give you a home with the 'X' factor. You'll enjoy the feeling of generous living areas on a surprisingly small footprint.



BH90

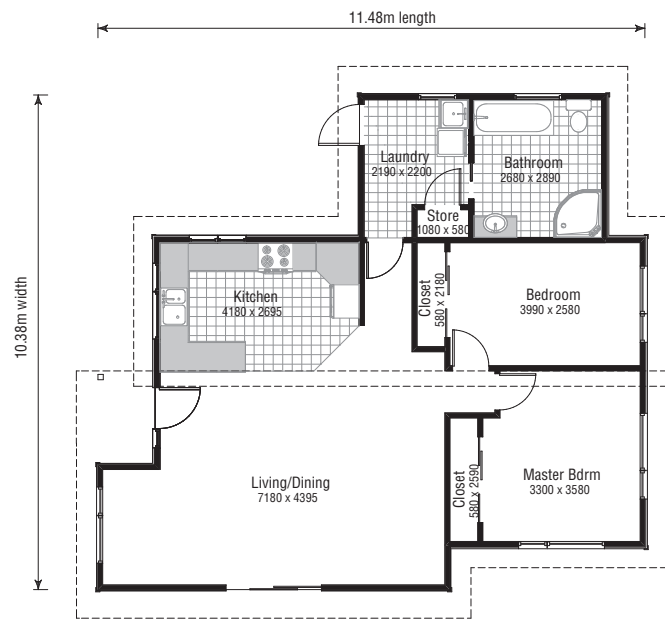
House Area 90m²
Lot size 22m L x 18m W*

Master bedroom	3300x3580mm
Living	7180x4395mm
Kitchen	4180x2695mm
Bathroom	2680x2890mm

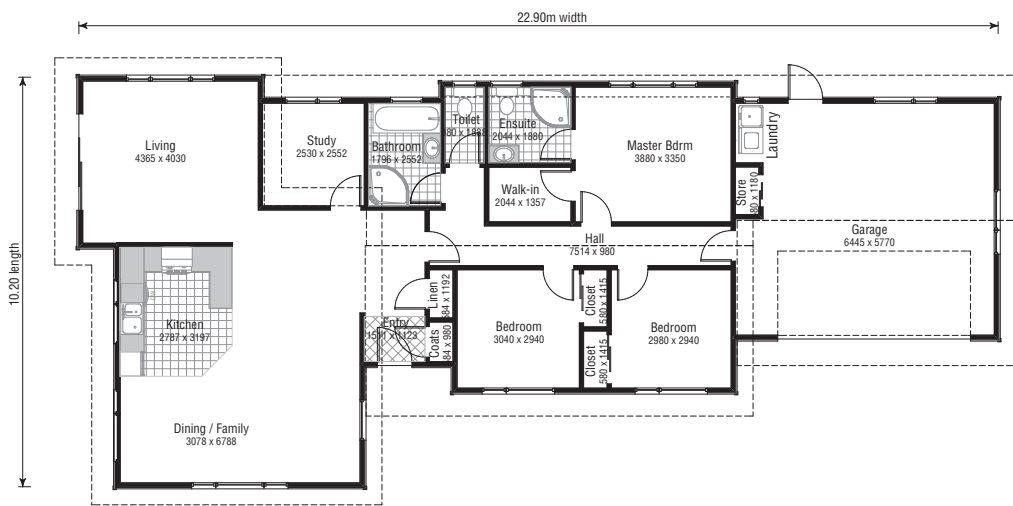


Get off to a great start with this spacious open-plan style two bedroom design. It provides easy, modern living that is larger than it looks.

- Spacious open-plan living
- 2 double bedrooms
- Separate laundry
- 1 bathroom



*Guide only. Please check local council requirements.



*Guide only. Please check local council requirements.

The kitchen forms the hub between two generously scaled living areas in this large family home with master suite and separate study.

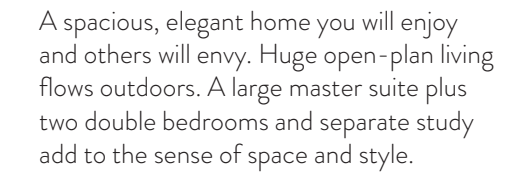
- Spacious open-plan living
- Two living areas
- Separate study
- 3 double bedrooms including master with ensuite and walk in wardrobe
- 2 bathrooms (including ensuite)
- Double internal access garage

BH174G

House Area 174m²
Lot size 20.5m L x 30m W*

Master bedroom	3880x3350mm
Living	4365x4030mm
Dining/Family	3078x6788mm
Kitchen	2787x3197mm
Bathroom	1796x2552mm





- Spacious open-plan living
- 3 double bedrooms including master with ensuite and walk in wardrobe
- Separate study or 4th bedroom
- 2 bathrooms (including ensuite)
- Separate WC to bathroom
- Double internal access garage
- Carport included

BH238G

House Area	238m ²
Lot size	36.5m L x 22m W*
Master bedroom	4240x5285mm
Living	10320x7232mm
Kitchen	5340x2805mm
Bathroom	2000x3305mm



FIRST SERIES

BH50



BH65



BH75



BH120



BH135G



BH136G



BH150G



BH160G



BH167G



BH170G



BH192G



FIRST SERIES

The First Series homes deliver good quality, contemporary living for a smart ‘starter home’ solution, at an affordable price. Maximising space, comfort and value, they’re designed to make modern living easy.





BH50

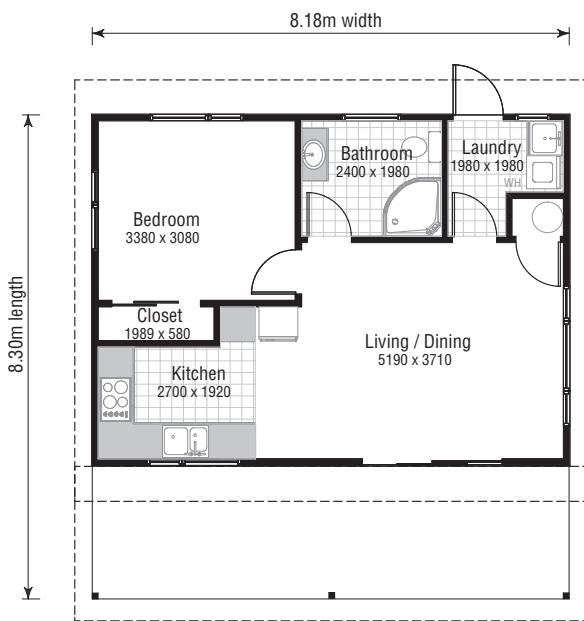
House Area	50m ²
Lot size	18.5m L x 15.5m W*

Master bedroom	3380x3080mm
Living	5190x3710mm
Kitchen	2700x1920mm
Bathroom	2400x1980mm



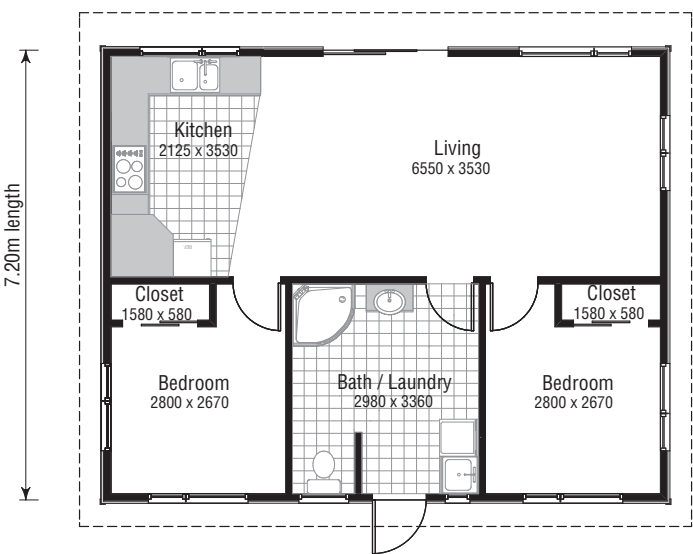
A smart solution for a minor dwelling, this practical home with spacious open-plan living delivers modern comfort and style.

- Spacious open-plan living
- Easy indoor/outdoor flow
- 1 bedroom
- Separate laundry
- 1 bathroom



*Guide only. Please check local council requirements.

9.00m width



*Guide only. Please check local council requirements.

Ideal for compact living, this home with generous open-plan design delivers practicality and style in one.

- Spacious open-plan living
- Easy indoor/outdoor flow
- 2 bedrooms
- Bathroom includes laundry



BH65

House Area	65m ²
Lot size	17.5m L x 16m W*

Bedroom	2800x2670mm
Living	6550x3530mm
Kitchen	2125x3530mm
Bathroom	2980x3360mm



BH75

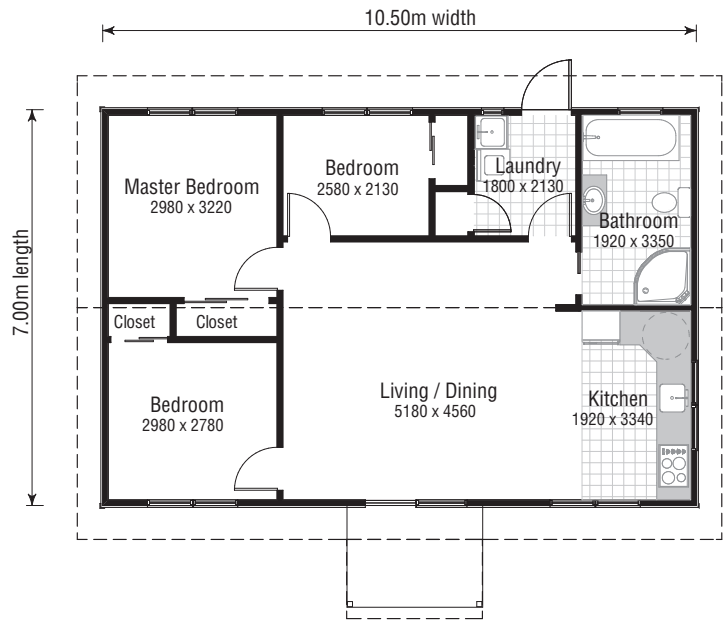
House Area 75m²
Lot size 17m L x 17.5m W*

Master bedroom	2980x3220mm
Living	5180x4560mm
Kitchen	1920x3340mm
Bathroom	1920x3350mm

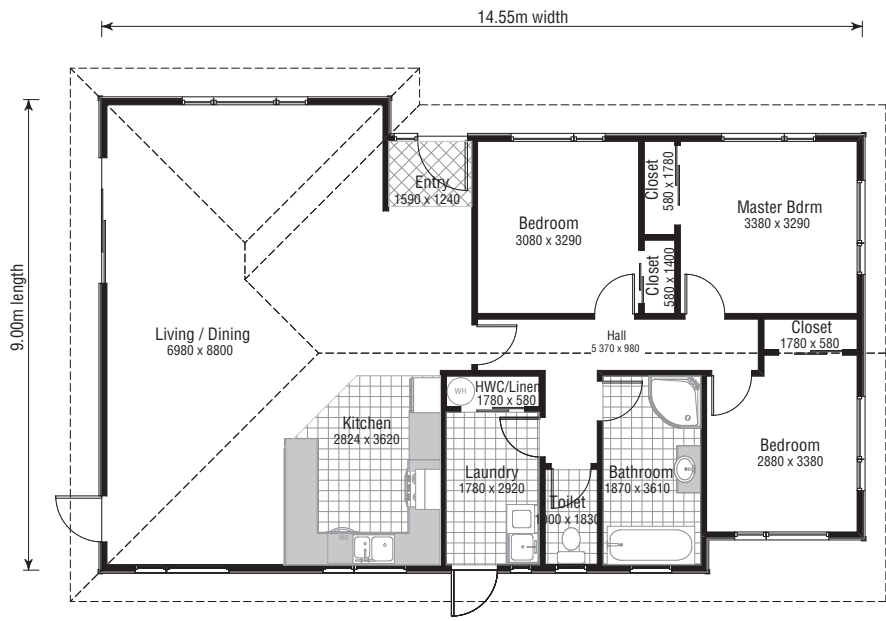


A smart solution for long, narrow sites, this practical home with spacious open-plan living delivers comfort and style in one.

- Spacious open-plan living
- Easy indoor/outdoor flow
- 3 bedrooms
- Large bathroom
- Separate laundry



*Guide only. Please check local council requirements.



*Guide only. Please check local council requirements.

Great living. Great value. A great starter home. This smart thinking design incorporates three bedrooms and the generous open-plan living of a much larger home.

- Spacious open-plan living
- 3 bedrooms
- Large laundry and linen storage
- Bathroom
- Separate WC

BH120

House Area 120m²
Lot size 19m L x 22m W*

Master bedroom	3380x3290mm
Living	6980x8800mm
Kitchen	2824x3620mm
Bathroom	1870x3610mm





BH135G

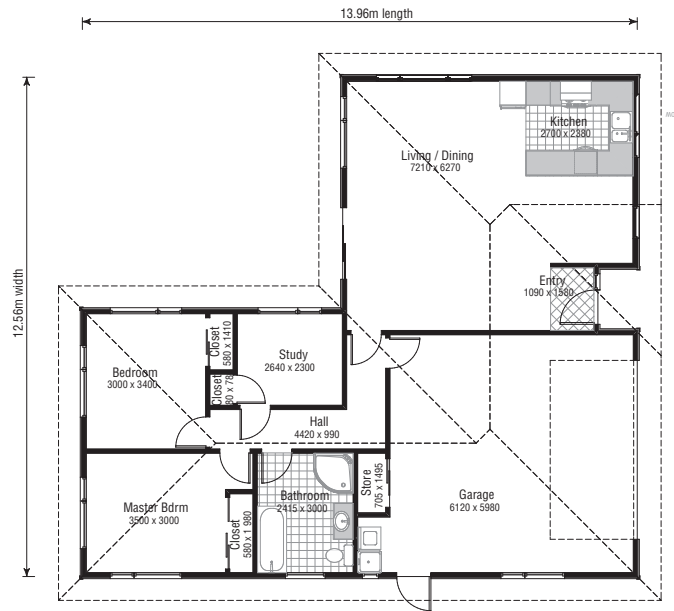
House Area 135m²
Lot size 24m L x 20m W*

Master bedroom	3500x3000mm
Living	7210x6270mm
Kitchen	2700x2380mm
Bathroom	2415x3000mm



This practical two-three bedroom home provides full sized family living in a compact space. Open-plan living opens outdoors to bring the outside in.

- Spacious open-plan living
- Easy indoor/outdoor flow
- 2 bedrooms
- Double internal access garage
- Separate study or 3rd bedroom
- Bathroom



*Guide only. Please check local council requirements.





BH136G

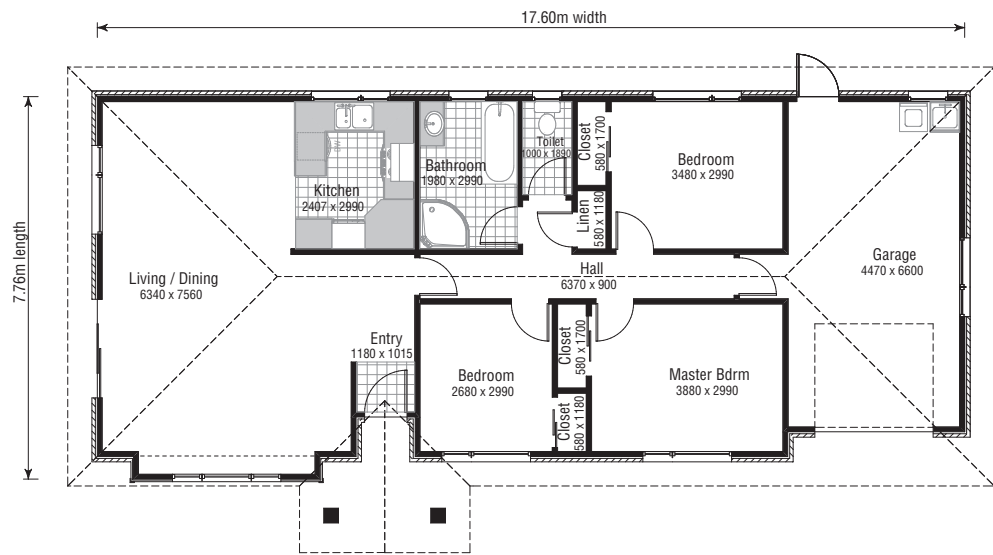
House Area 136m²
Lot size 18m L x 25m W*

Master bedroom	3880x2990mm
Living	6340x7560mm
Kitchen	2407x2990mm
Bathroom	1980x2990mm



A smart solution for long, narrow sites, this practical home with spacious open-plan living delivers comfort and style in one.

- Spacious open-plan living
- Easy indoor/outdoor flow
- 3 bedrooms
- Bathroom with separate WC
- Single internal access garage



*Guide only. Please check local council requirements.

BH150G

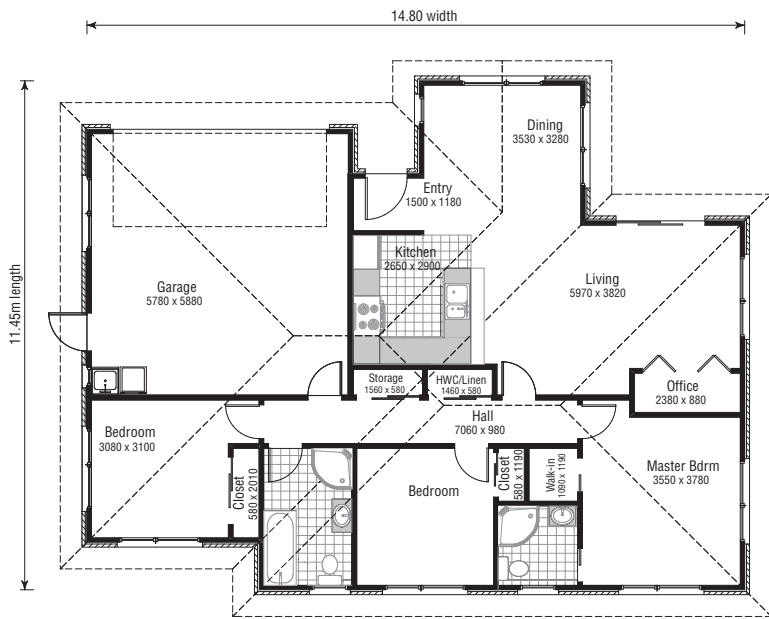
House Area 150m²
Lot size 21.5m L x 22m W*

Master bedroom	3550x3780mm
Living	5970x3820mm
Kitchen	2650x2900mm
Bathroom	1980x3080mm



A smart solution for a square site, this practical home with spacious open-plan living delivers comfort and style in one.

- Spacious open-plan living
- Easy indoor/outdoor flow
- 3 bedrooms
- Master bedroom with ensuite and walk-in-wardrobe
- Double internal access garage
- 2 bathrooms (including ensuite)



*Guide only. Please check local council requirements.



BH160G

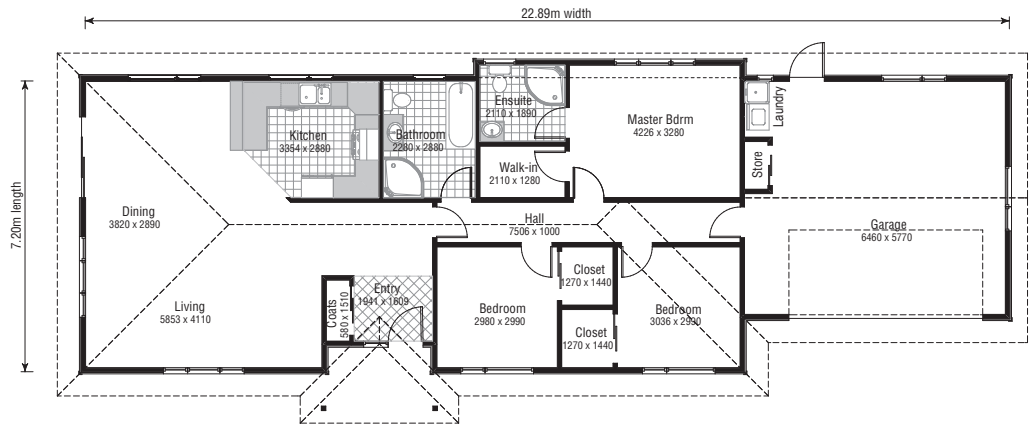
House Area 160m²
Lot size 17.5m L x 30m W*

Master bedroom	4226x3280mm
Living	5853x4110mm
Dining	3820x2890mm
Kitchen	3354x2880mm
Bathroom	2280x2880mm



A long, narrow site is no problem for this sleekly designed contemporary home with feature entry and generous open-plan living leading to the outdoors.

- Spacious open-plan living
- Easy indoor/outdoor flow
- 3 double bedrooms including master with ensuite and walk-in-wardrobe
- 2 bathrooms (including ensuite)
- Double internal access garage



*Guide only. Please check local council requirements.

BH167G

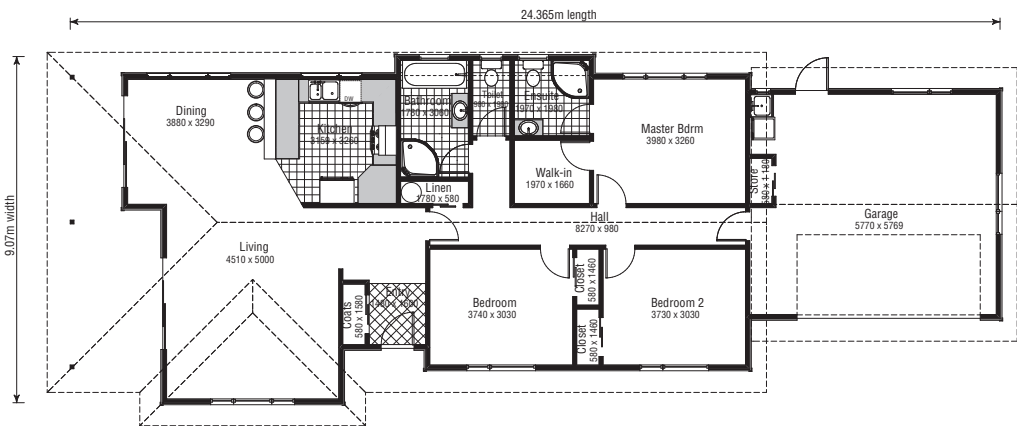
House Area 167m²
Lot size 31.5m L x 19m W*

Master bedroom	3980x3260mm
Living	4510x5000mm
Dining	3880x3290mm
Kitchen	3159x3260mm
Bathroom	1780x3060mm



Show off in style with this impressive entertainer. Light filled and spacious, the expansive open-plan living features double doors leading to a covered verandah.

- Spacious open-plan living
- Easy indoor/outdoor flow
- 3 double bedrooms including master with ensuite and walk-in-wardrobe
- 2 bathrooms (including ensuite)
- Covered verandah
- Double internal access garage



*Guide only. Please check local council requirements.



BH170G

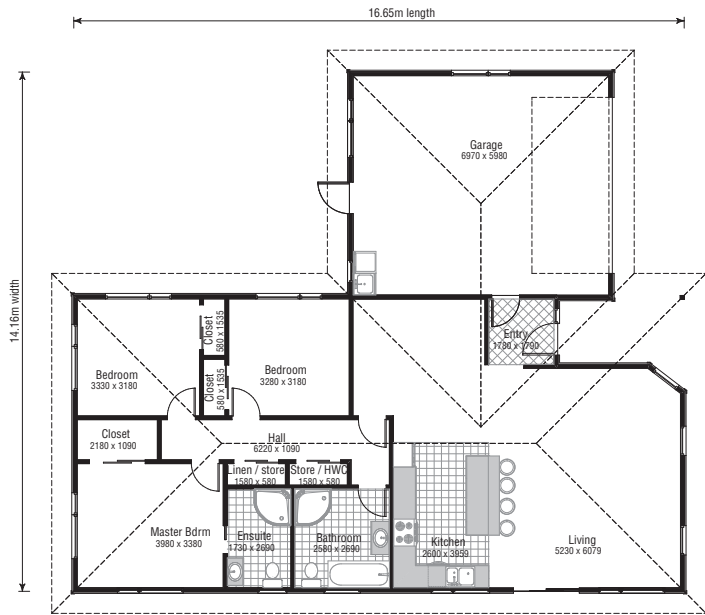
House Area 170m²
Lot size 27m L x 21.5m W*

Master bedroom	3980x3380mm
Living	5230x6079mm
Kitchen	2600x3959mm
Bathroom	2580x2690mm

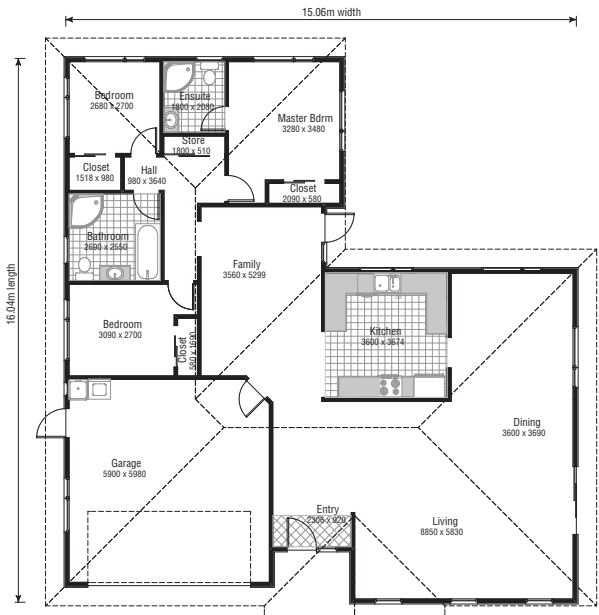


Space and light abound in this generously proportioned home. It caters for every comfort with large scale living and entertaining designed to capture the sun.

- Spacious open-plan living
- Easy indoor/outdoor flow
- 3 double bedrooms including master with ensuite and walk-in-wardrobe
- 2 bathrooms (including ensuite)
- Double internal access garage



*Guide only. Please check local council requirements.



*Guide only. Please check local council requirements.

BH192G

House Area 192m²
Lot size 26.5m L x 21.5m W*

Master bedroom	3280x3480mm
Living	8850x5830mm
Dining	3600x3690mm
Kitchen	3600x3674mm
Bathroom	2690x2550mm



Large open-plan living, family room and kitchen form the big heart of this smartly designed three bedroomed home.

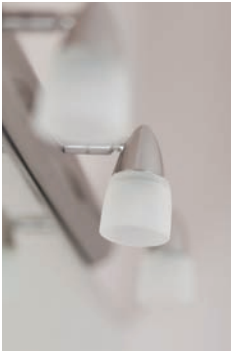
- Spacious open-plan with 2 living areas
- 3 double bedrooms including master with ensuite
- 2 bathrooms (including ensuite)
- Double internal access garage

LIVING SERIES



**LIVING
SERIES**

Those who have a taste for more expansive living will appreciate the impressive range of options in the Living Series. In whichever area you need more space, you'll find a home designed to suit.



BH184G

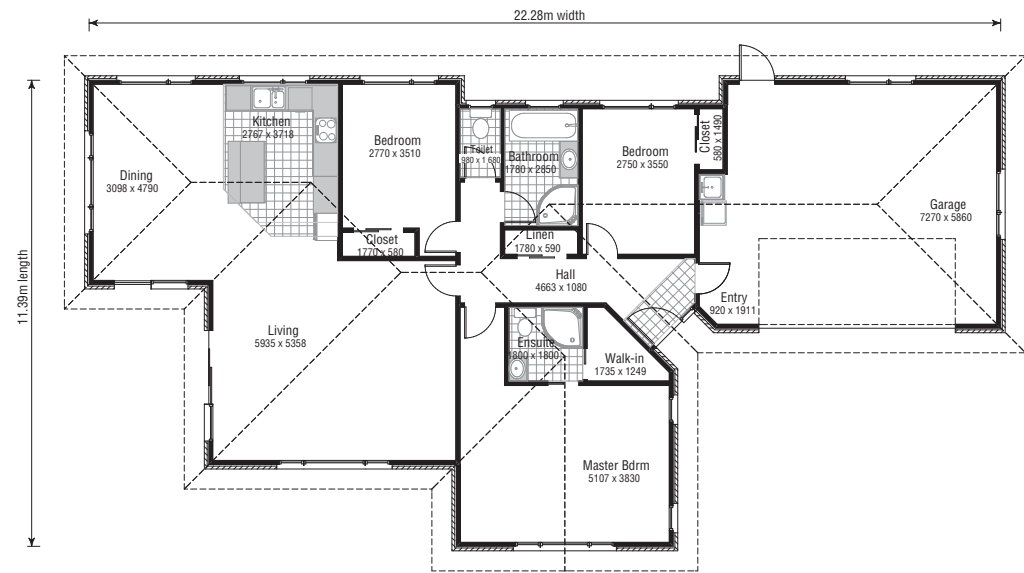
House Area 184m²
Lot size 21.5m L x 30m W*

Master bedroom	5107x3830mm
Living	5935x5358mm
Dining	3098x4790mm
Kitchen	2767x3718mm
Bathroom	1780x2850mm

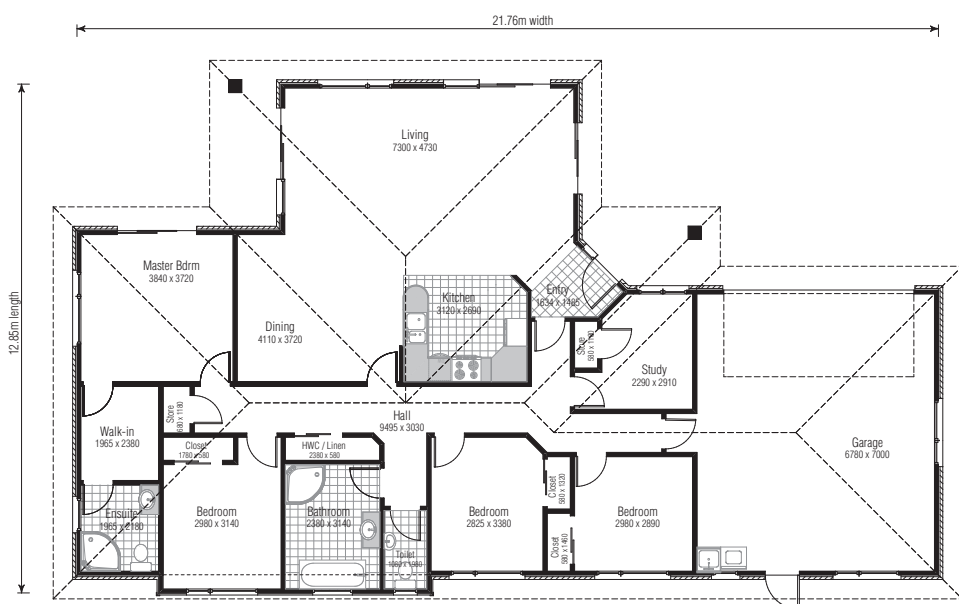


You'll love the easy indoor/outdoor flow of this well planned home with generous open-plan living and three bedrooms including large master suite.

- Spacious open-plan living
- Easy indoor/outdoor flow
- 3 bedrooms including master with ensuite and walk-in-wardrobe
- 2 bathrooms (including ensuite)
- Separate WC
- Double internal access garage



*Guide only. Please check local council requirements.



*Guide only. Please check local council requirements.

Wide open living sweeps outdoors in this spacious home. Four bedrooms including large master suite and study.

- Spacious open-plan living
- Easy indoor/outdoor flow
- 4 bedrooms including master with ensuite and walk-in-wardrobe
- 2 bathrooms (including ensuite)
- Separate WC to bathroom
- Covered entrance and patio area
- Double internal access garage
- Separate study

BH214G

House Area 214m²
Lot size 23m L x 29m W*

Master bedroom	3840x3720mm
Living	7300x4730mm
Dining	4110x3720mm
Kitchen	3120x2690mm
Bathroom	2380x3140mm





BH250G

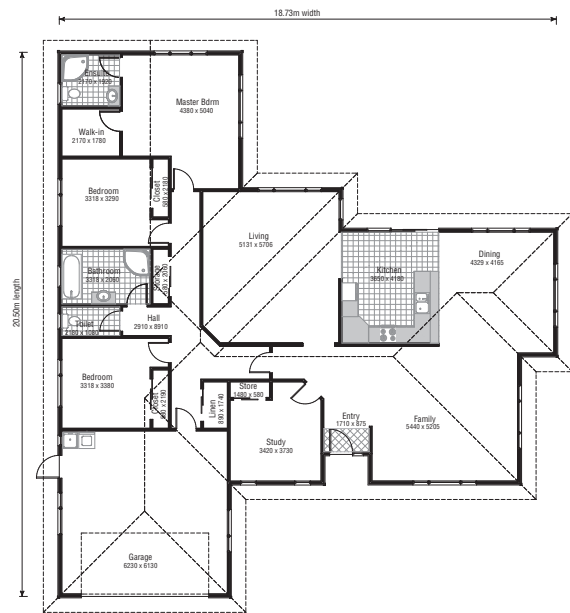
House Area 250m²
Lot size 30.5m L x 26m W*

Master bedroom	4380x5040mm
Living	5131x5706mm
Dining	4329x4165mm
Family	5440x5205mm
Kitchen	3650x4180mm



Lose yourself in the big-hearted proportions of this eye-catching home.

- Easy indoor/outdoor flow
- Open-plan with 2 living areas
- 3 bedrooms including master with ensuite and walk-in-wardrobe
- 2 bathrooms (including ensuite)
- Double internal access garage
- Separate study or 4th bedroom
- Separate WC to bathroom



*Guide only. Please check local council requirements.





BH265G

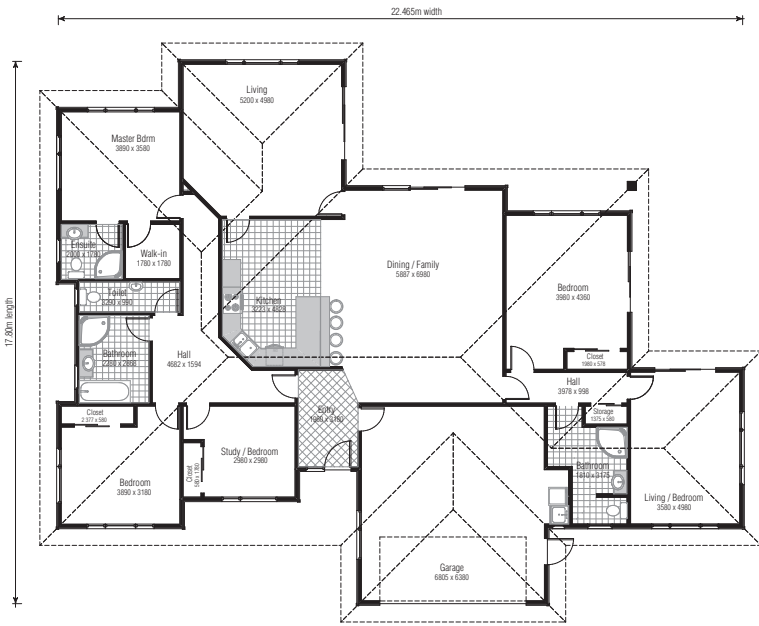
House Area 265m²
Lot size 28m L x 30m W*

Master bedroom	3890x3580mm
Living	5200x4980mm
Dining	5887x6980mm
Kitchen	3223x4828mm
Bathroom	2280x2868mm

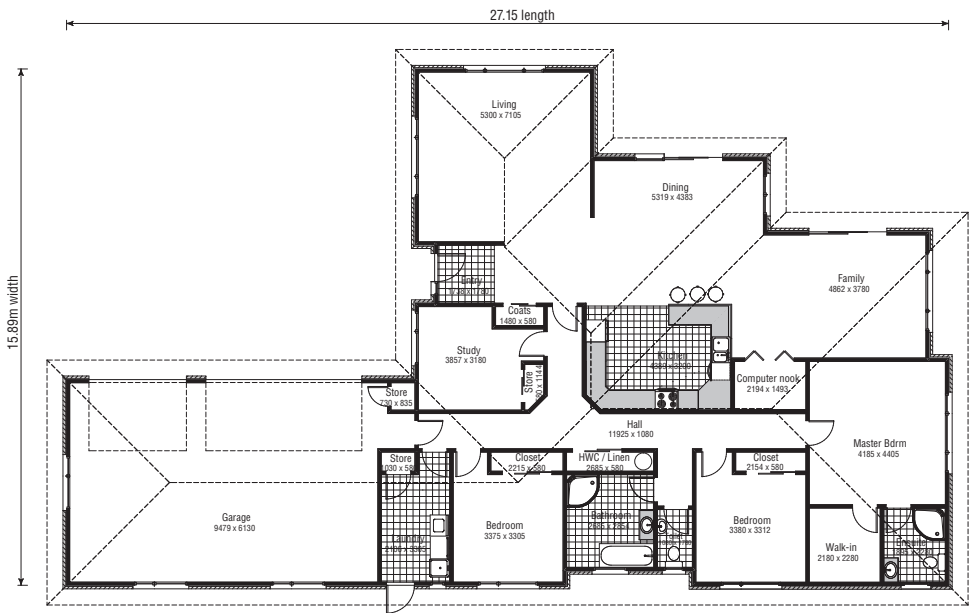


Spacious living forms the heart of this generously proportioned home. Featuring four bedrooms including master suite, and separate study, there is space to be together, and space to be apart.

- Open-plan with 2 living areas
- 4 bedrooms
- 3 bathrooms (including ensuite)
- Separate WC to bathroom
- Large separate laundry
- Extended living potential
- Double internal access garage
- Separate study or 5th bedroom



*Guide only. Please check local council requirements.



*Guide only. Please check local council requirements.

Enjoy the good life in this elegant, spacious light-filled home. Stunning indoor outdoor flow. Wide sweeping living/dining and family zones blend together, or seamlessly separate. Add a large master suite, large office and triple car garaging, and this is your dream home come true.

- 2 living areas
- 3 bedrooms including master with ensuite and walk-in-wardrobe
- Separate study or 4th bedroom
- Ample storage
- Large separate laundry
- Triple internal access garage
- Computer nook

BH282G

House Area 282m²
Lot size 37.5m L x 23m W*

Master bedroom	4185x4405mm
Living	5300x7105mm
Dining	5319x4383mm
Kitchen	4389x3200mm
Bathroom	2685x2854mm



TRANSPORTABLE SERIES

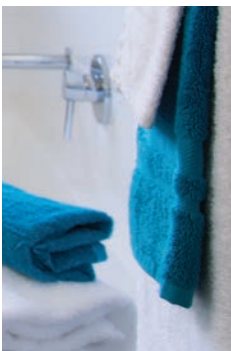
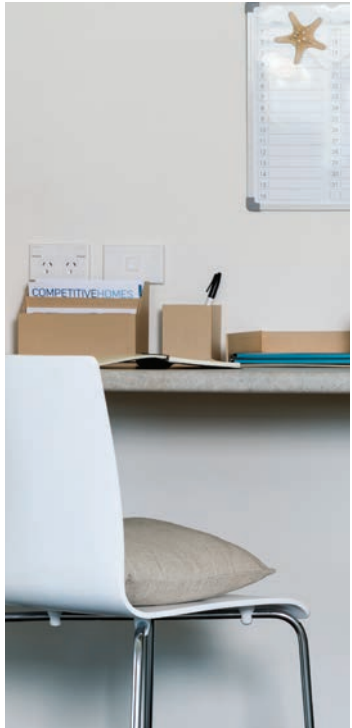


Available in Nuline Weatherboard as standard. Alternative cladding options are available.



TRANSPORTABLE
SERIES

Designed to be transportable, this range of family-size homes offers a fast, cost-effective alternative for difficult site conditions.



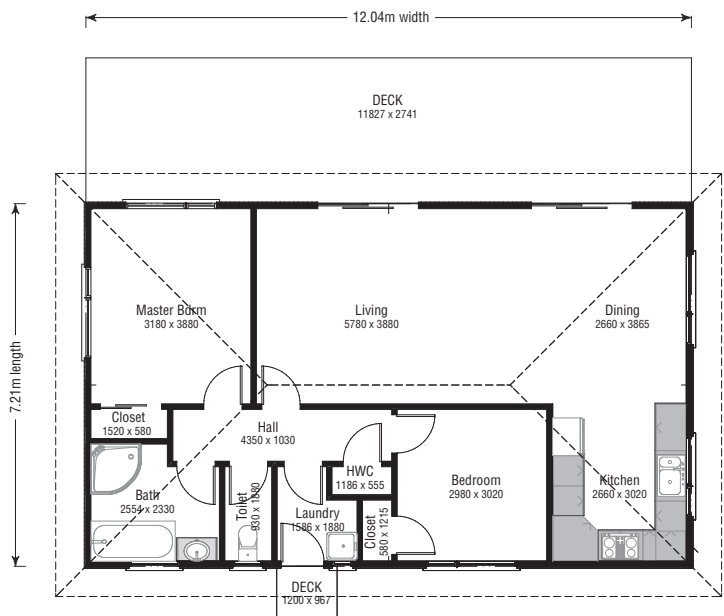
TB86

House Area 86m²
Lot size 17.5m L x 19m W*

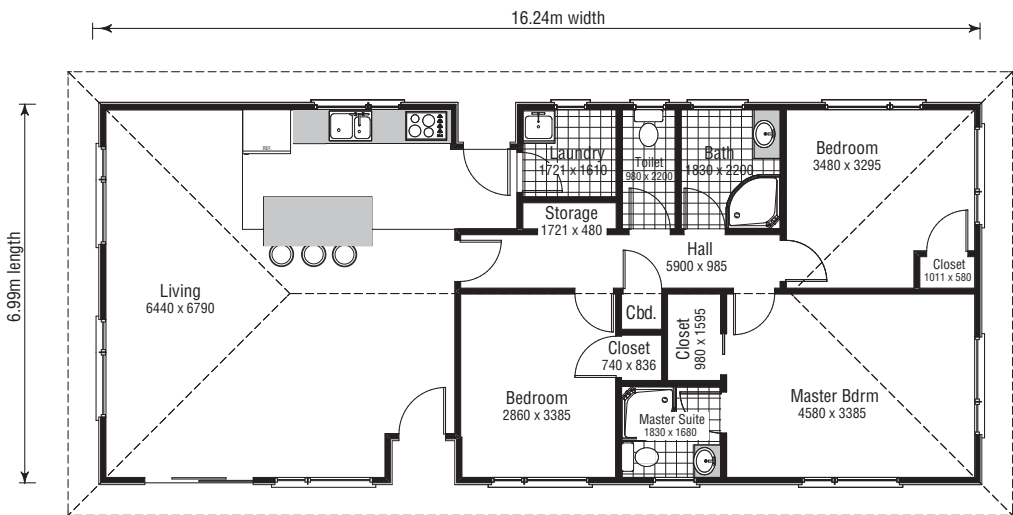
Master bedroom	3180x3880mm
Living	5780x3880mm
Dining	2660x3865mm
Kitchen	2660x3020mm
Bathroom	2554x2330mm

A great starter home with generous size open-plan living, 2 bedrooms, large bathroom and separate toilet.

- Spacious open-plan living
- 2 bedrooms
- Separate laundry and bathroom
- Decks are an optional extra
- Separate WC



*Guide only. Please check local council requirements.



*Guide only. Please check local council requirements.

TB112

House Area 112m²
Lot size 17m L x 23.5m W*

Master bedroom	4580x3385mm
Living	6440x6790mm
Bathroom	1830x2200mm

With all the added extras of an ensuite, second bathroom and separate large laundry, this 3 bedroom open-plan design gives you a great contemporary home.

- Easy indoor/outdoor flow
- 3 double bedrooms. Master with ensuite
- Open-plan living to kitchen/dining area
- Bathroom
- Separate WC





TB120

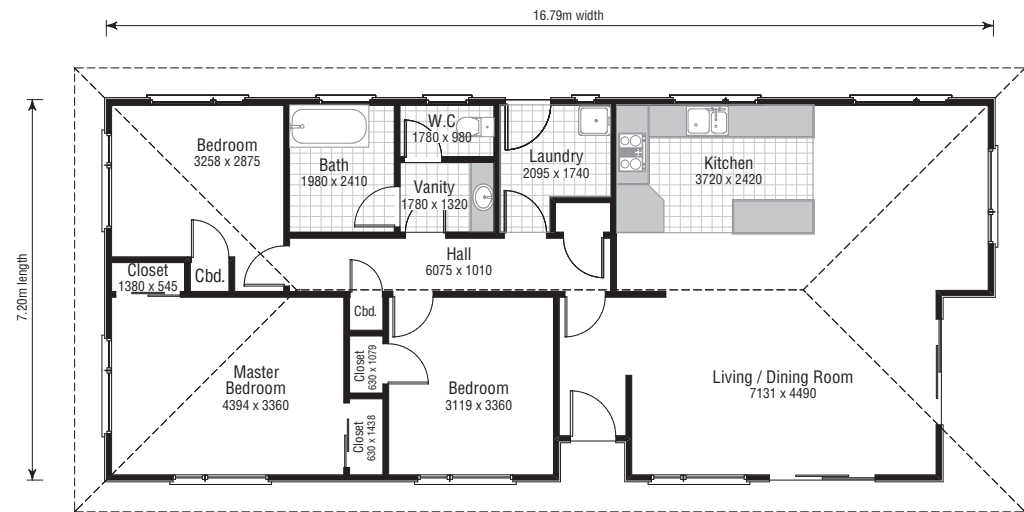
House Area 120m²
Lot size 17.5m L x 24m W*

Master bedroom	4394x3360mm
Living/Dining	7131x4490mm
Kitchen	3720x2420mm
Bathroom	1980x2410mm

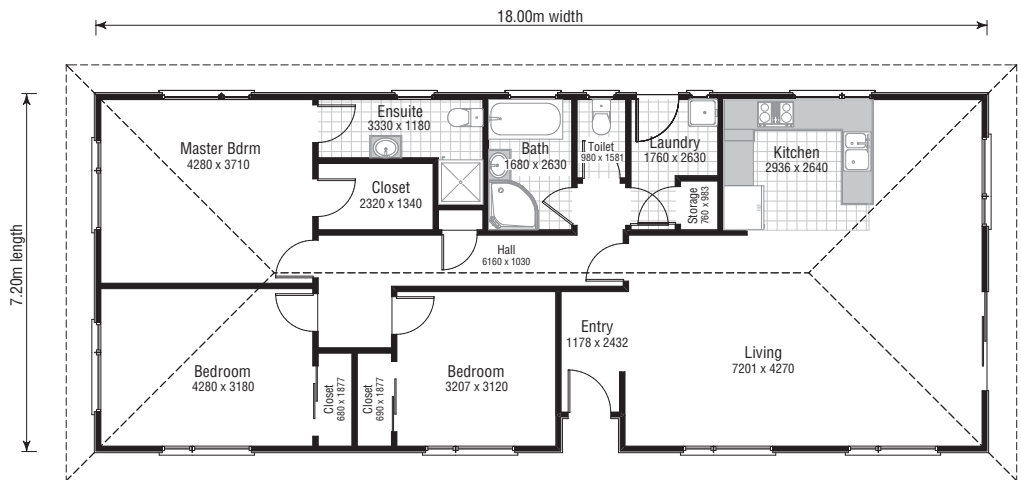


Simplicity is key to a great family lifestyle with this stylish 3 bedroom open-plan living home with generously proportioned bathroom.

- Spacious open-plan living and dining area
- Easy indoor/outdoor
- 3 double bedrooms
- Bathroom with separate toilet



*Guide only. Please check local council requirements.



*Guide only. Please check local council requirements.

Live with a little luxury. This home has space galore with large open-plan living and kitchen areas, 3 bedrooms, master with ensuite plus a well proportioned bathroom with separate toilet and separate laundry.

- Spacious open-plan living
- Easy indoor/outdoor living
- 3 bedrooms. Master with ensuite and walk-in-wardrobe
- Bathroom and separate WC

TB130

House Area 130m²
Lot size 17.5m L x 25m W*

Master bedroom	4280x3710mm
Living	7201x4270mm
Kitchen	2936x2640mm
Bathroom	1680x2630mm





TBC100

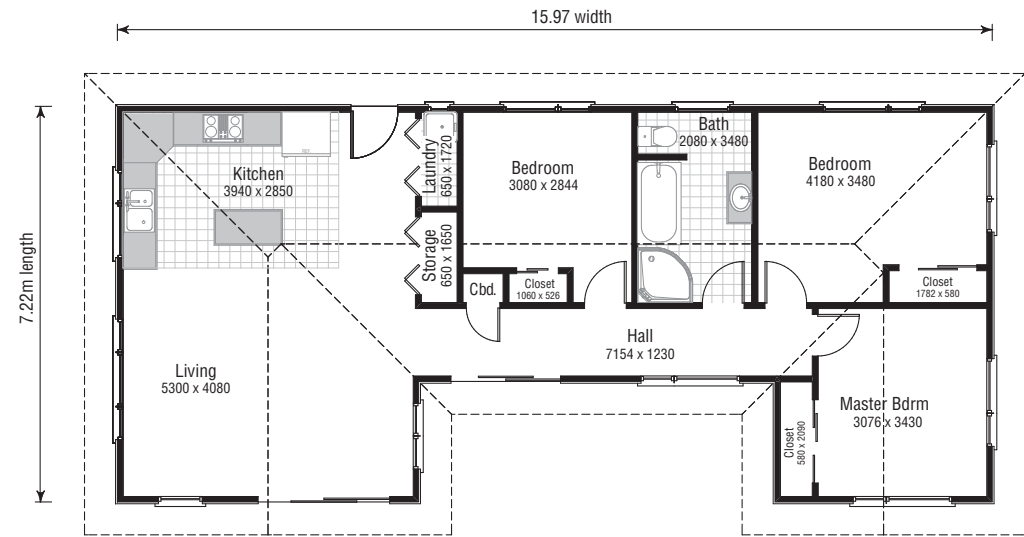
House Area	100m ²
Lot size	17.5m L x 23m W*

Master bedroom	3076x3430mm
Living	5300x4080mm
Kitchen	3940x2850mm
Bathroom	2080x3480mm

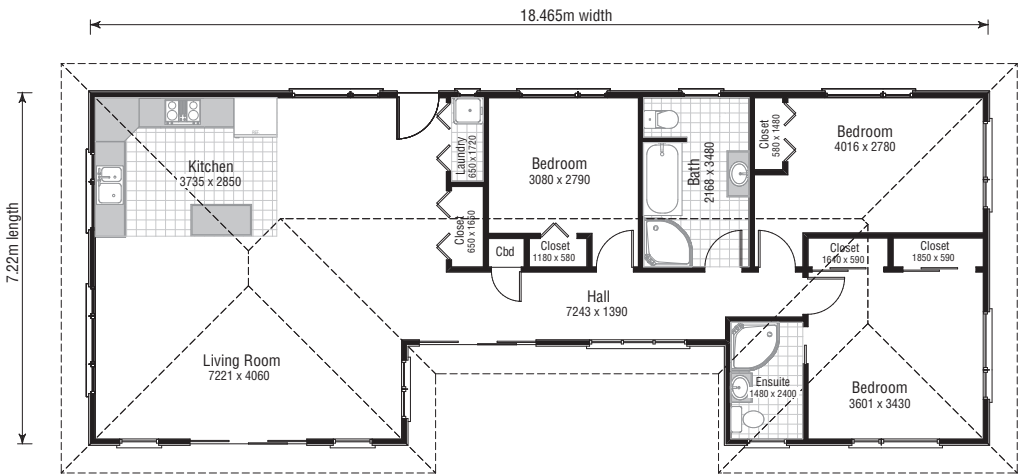


Keep an eye on the kids while you work in the kitchen with this well thought out open style living plan. 3 bedrooms and large bathroom complete this family home.

- Spacious open-plan living
- 3 bedrooms
- 1 bathroom



*Guide only. Please check local council requirements.



*Guide only. Please check local council requirements.

TBC120

House Area	120m ²
Lot size	17.5m L x 25.5m W*

Master bedroom	3601x3430mm
Living	7221x4060mm
Kitchen	3735x2850mm
Bathroom	2168x3480mm



Luxury lifestyle. This home has space galore with large open-plan living and kitchen areas, 3 bedrooms and separate laundry.

- Spacious open-plan living
- Easy indoor/outdoor living
- 3 bedrooms
- 2 bathrooms (including ensuite)

TOWNHOUSE SERIES

BTH154/BTH39G



BTH155G



BTH184G



BTH185G



BTH200G



TOWNHOUSE SERIES

Compact, contemporary and very stylish, these smartly designed townhouses are the perfect solution for sloping or awkward sites and city living.



BTH154/ BTH39G

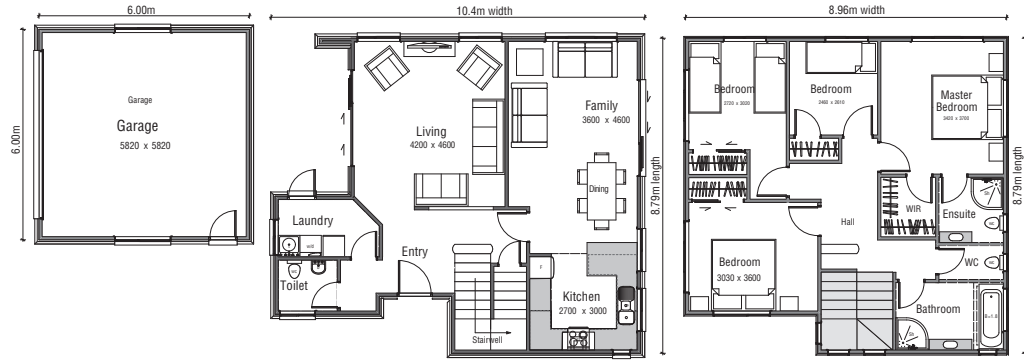
House Area 154m²
Lot size 19m L x 17.5m W*

Master bedroom	3420x3700mm
Living	4200x4600mm
Kitchen	2700x3000mm
Bathroom	3000x1879mm



The separate formal living area makes this contemporary 4 bedroom, 2 storey design an entertainer's delight. Features include open-plan living with excellent indoor/outdoor flow, 4 bedrooms, 2 bathrooms and double garaging.

- Spacious open-plan living
- 4 bedrooms. Master with ensuite and walk-in-wardrobe
- Large laundry and linen storage
- 2 bathrooms (including ensuite)
- 2 separate WC
- Double garage (optional extra)



*Guide only. Please check local council requirements.



BTH155G

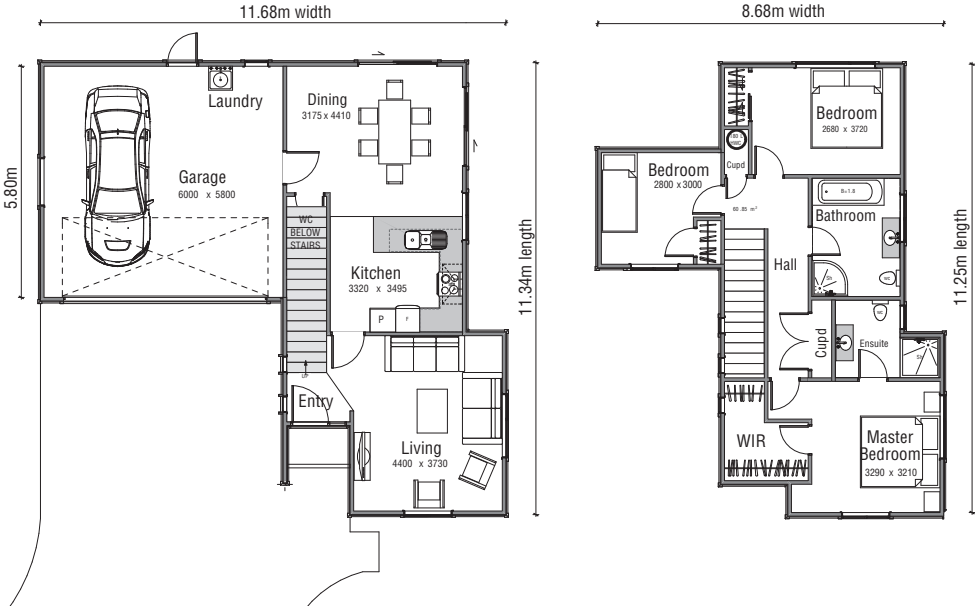
House Area 155m²
Lot size 21.5m L x 19m W*

Master bedroom	3290x3210mm
Living	4400x3730mm
Kitchen	3320x3495mm
Bathroom	2970x2220mm

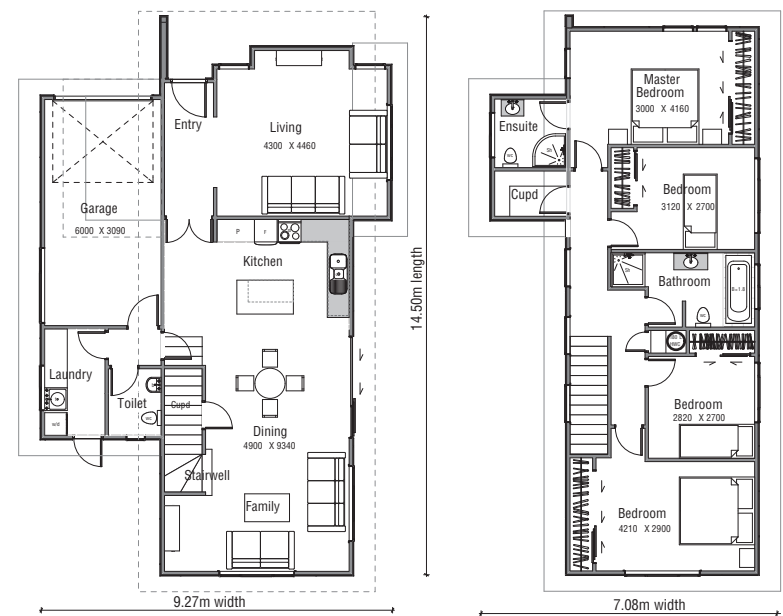
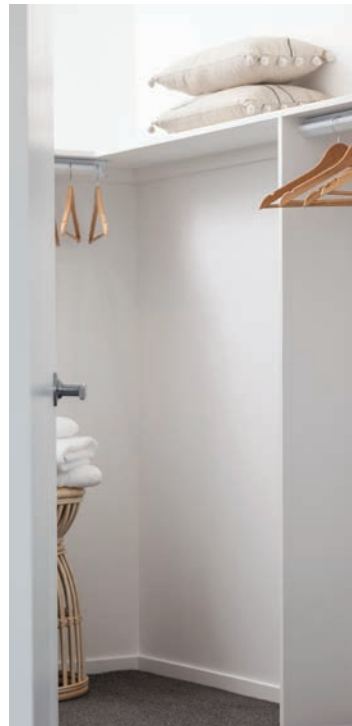


This stylish 3 bedroom, 2 bathroom, 2 storey home with double garaging is ideal as a starter home or for couples. The open-plan kitchen and dining with doors opening outside complete this urban entertainer.

- Easy indoor/outdoor
- 3 double bedrooms. Master with ensuite and walk-in-wardrobe
- Separate living to kitchen/dining area
- 2 bathrooms (including ensuite)
- Double internal access garage



*Guide only. Please check local council requirements.



*Guide only. Please check local council requirements.

Take advantage of a long narrow site with this well designed modern home. With extra large windows to maximize sun, features include open-plan living with exceptional flow to the outside. 4 generous bedrooms, 2 bathrooms and single garage complete the package.

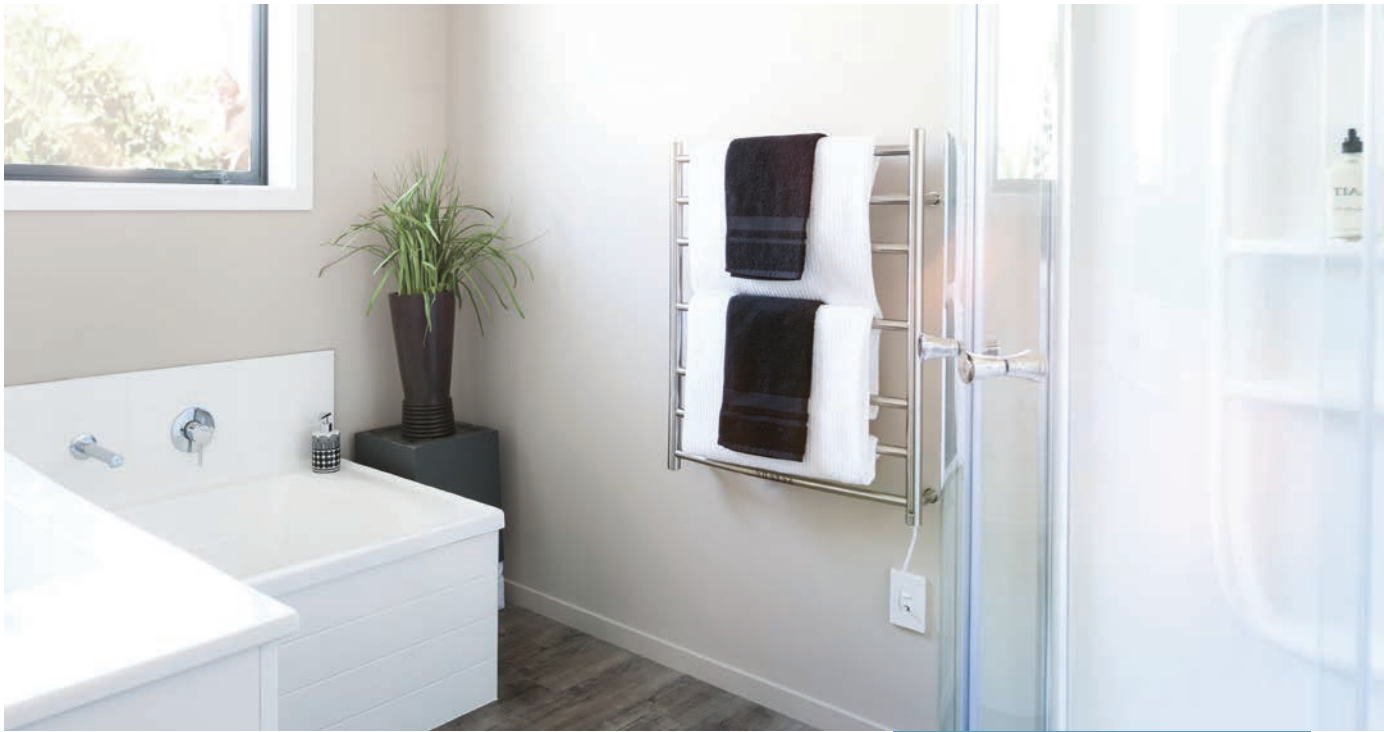
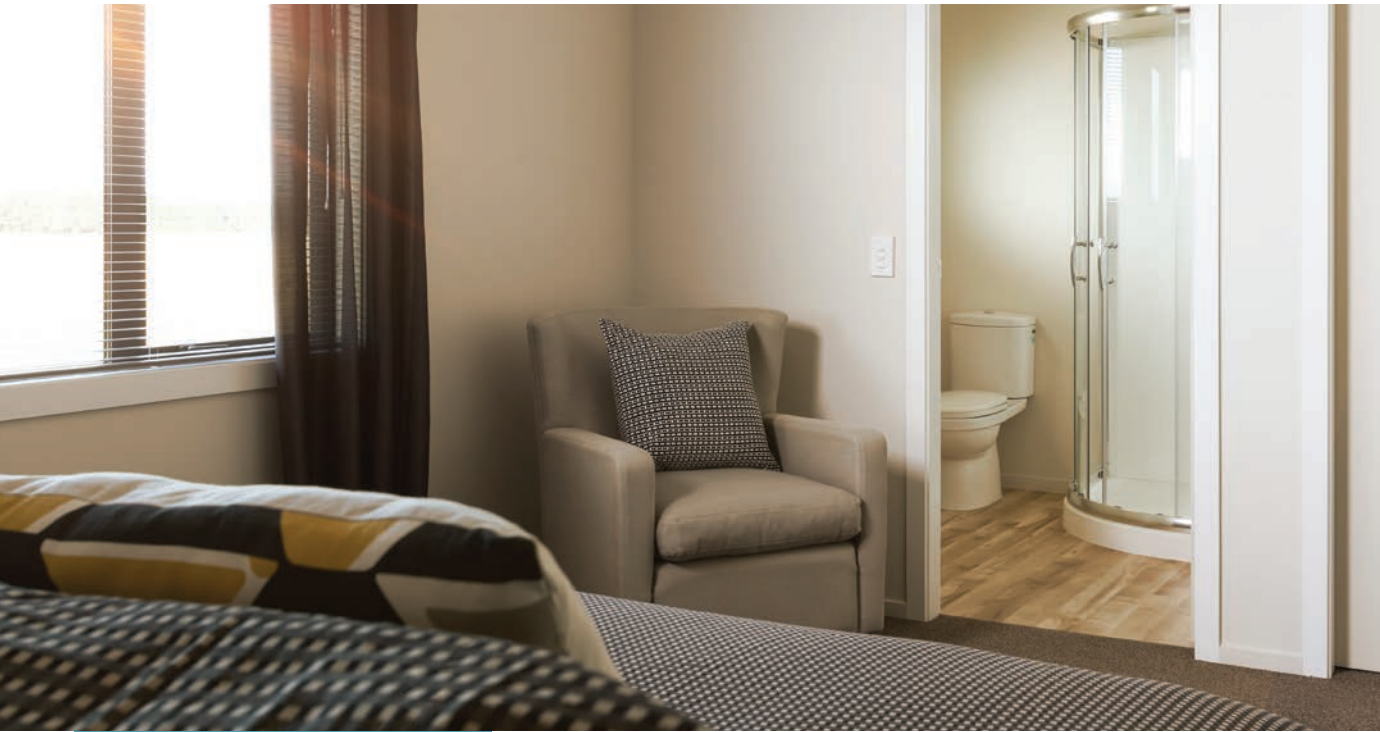
- Spacious open-plan living
- Easy indoor/outdoor flow
- 4 bedrooms
- 2 bathrooms (including ensuite)
- Separate toilet
- Single internal access garage

BTH184G

House Area	184m ²
Lot size	24.5m L x 16.5m W*

Master bedroom	3000x4160mm
Living	4300x4460mm
Kitchen/Family	4900x9340mm
Bathroom	1970x2730mm





BTH185G

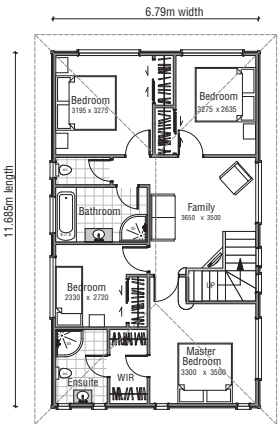
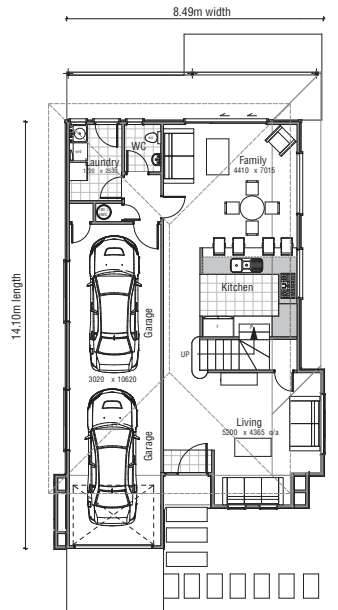
House Area	185m ²
Lot size	24.5m L x 15.5m W*

Master bedroom	3300x3500mm
Living	5200x4365mm
Kitchen/Family	4410x7015mm
Bathroom	1800x2930mm

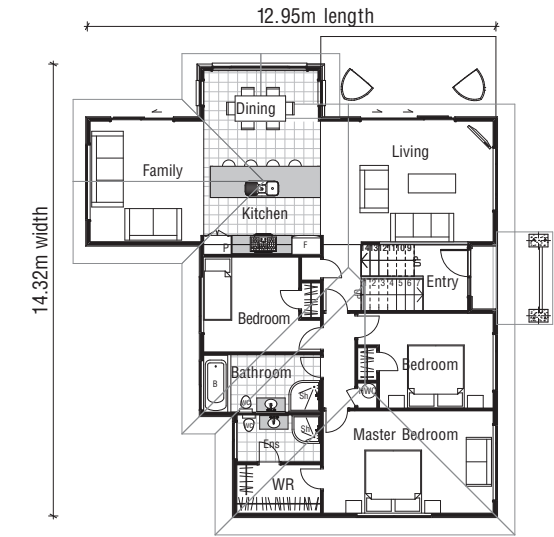


Generous 185m² home is made for large families with teenagers in mind. 4 bedrooms with extra family room on second floor, 2 bathrooms and open-plan living opening onto a large verandah, makes a comfortable home for the whole family.

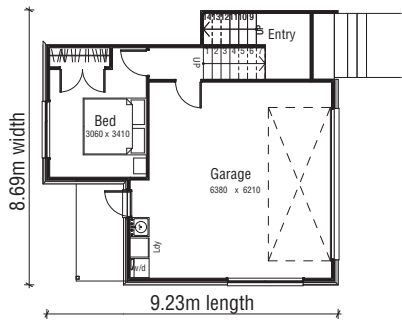
- Spacious open-plan living. 2 family rooms
- Easy indoor/outdoor flow
- Covered verandah
- 4 double bedrooms. Master with ensuite and walk-in-wardrobe
- 2 bathrooms (including ensuite)
- 2 separate toilets



*Guide only. Please check local council requirements.



*Guide only. Please check local council requirements.



Designed specifically for sloping sections, this split level home is ideal for families with teenagers. With 4 bedrooms, (one downstairs off the internal double garage) and 2 bathrooms there is plenty of room for a spacious family lifestyle.

- Spacious open-plan living
- 4 bedrooms. Master with ensuite and walk-in-wardrobe
- Double internal access garage
- 2 bathrooms (including ensuite)

BTH200G

House Area	200m ²
Lot size	23m L x 21.5m W*

Master bedroom	3240x5380mm
Living	3620x5340mm
Kitchen/Dining	3620x5330mm
Bathroom	1820x3620mm



VILLA SERIES

BV120



BV145

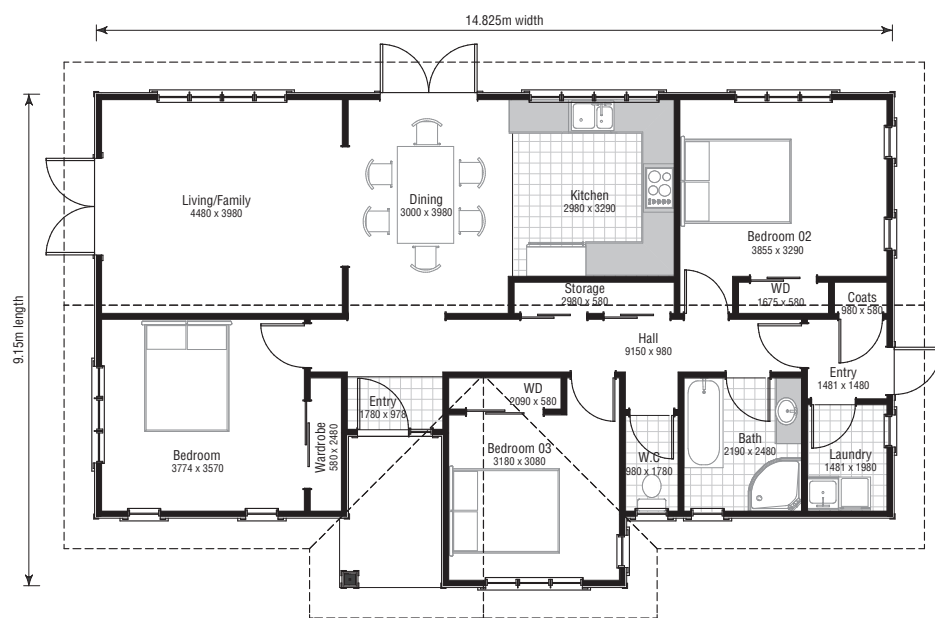


BV230



VILLA SERIES

Enjoy all the traditional styling and generous sizing of villa living with all the advantages of a modern contemporary home. The Villa Series offers you the best of both worlds.



A classic, smaller style home with 3 double bedrooms and ample storage.

- Open plan living
- 3 double bedrooms
- 1 bathroom with separate toilet
- Lots of storage
- Covered entrance

BV120

House Area 120m²

Lot size 19.5m L x 22m W*

Master bedroom 3774x3570mm

Living 4480x3980mm

Dining 3000x3980mm

Kitchen 2980x3290mm

Bathroom 2190x2480mm



VILLA SERIES



BV145

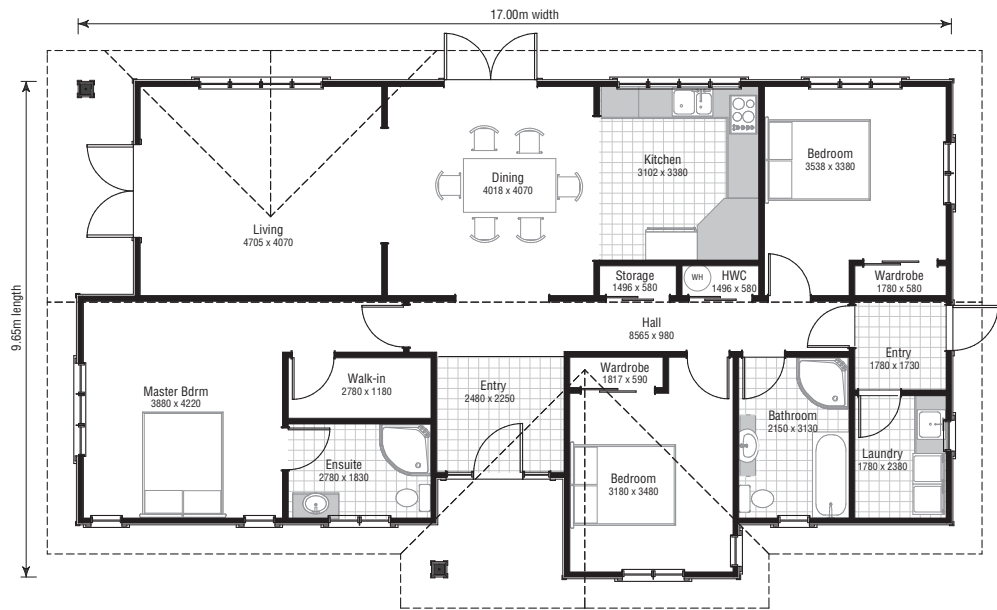
House Area 145m²
Lot size 20m L x 24m W*

Master bedroom	3800x4220mm
Living	4705x4070mm
Dining	4018x4070mm
Kitchen	3102x3380mm
Bathroom	2150x3130mm

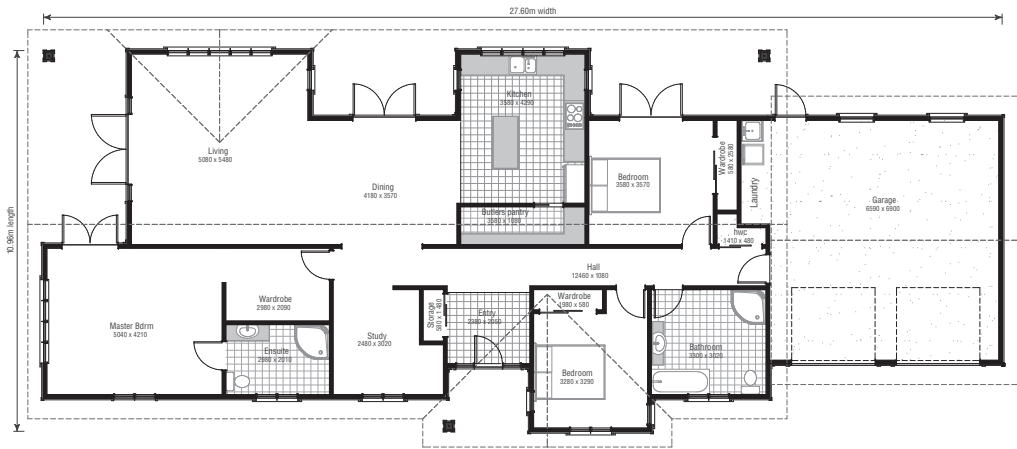


A smart solution for a medium style home that is practical with spacious open plan living.

- 3 double bedrooms including master with walk-in-wardrobe and ensuite
- 2 bathrooms (including ensuite)
- Easy indoor/outdoor flow
- Lots of storage
- Covered entrance
- Separate laundry



*Guide only. Please check local council requirements.



*Guide only. Please check local council requirements.

A large style home that is practical with spacious open plan living and double garage, it delivers comfort and style in one.

- Open plan living
- 3 double bedrooms including master with walk-in-wardrobe and ensuite
- Separate study or 4th bedroom
- Large kitchen with butler's pantry
- 2 bathrooms (including ensuite)
- Easy indoor/outdoor flow
- Lots of storage
- Double garage

BV230

House Area 230m²
Lot size 21m L x 35m W*

Master bedroom	5040x4210mm
Living	5080x5480mm
Dining	4180x3570mm
Kitchen	3580x4290mm
Bathroom	3300x3020mm





EXCELLENCE IN BUILDING SOLUTIONS

competitivehomes.co.nz